

SidneyPacific

---

# August House Meeting

Tuesday, August 6<sup>th</sup>, 2013

---



# Agenda

- Trustee vote
- SP Buddy Program
- Orientation
- Facilitating recycling and composting
- Newsletter committee
- Service awards
- Service shout-outs
- Upcoming events
- Open floor

# SP Trustee Nominations

- Role of Trustees
  - Serve as advisors to SPEC and the House Council
  - Administrate elections
  - Ensure adherence to the SP Constitution
  - Resolve formal complaints, i.e., discipline
- Introductions today
- Voting at August House Meeting <-Today!!
  - Confirmed with 2/3 vote of House Council

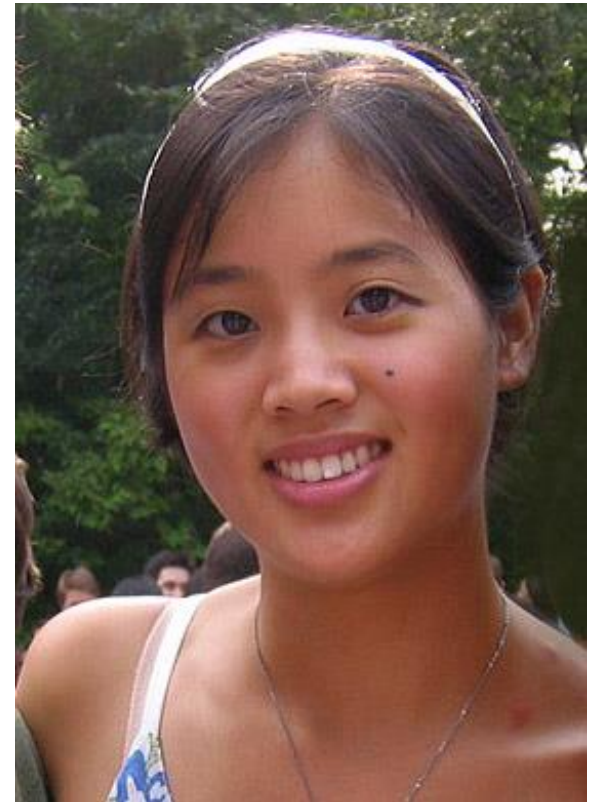
# Trustee Nominee Mirna Slim

- Lived in SP for 5 years
- Past involvement
  - Outing (2009-2010)
  - VP of Reslife (2010-2011)
  - Active volunteer



# Trustee Nominee Diana Chien

- Lived in SP for 3 years
- Past involvement
  - Outing (2011-2013)
  - Many Arts-related events



# BEING CANADIAN:

the Boris Brauerman  
Story 

by  
Fabian  
Kozynski



**I HAVE NO IDEA WHAT YOU'RE TALKING  
ABOUT SO HERE'S VIKING DAN  
KOLODRUBETZ RIDING HIS WAFFLE  
STEED TO CERTAIN GLORY IN BATTLE**



# Trustee Vote

- Secret ballot
- Hall Councilors have a special ballot
- Mark the box to vote for confirming the nominee; leave the box blank to vote against confirmation
- **You can vote for one, both, or neither nominee**



# Trustee Vote

## Sidney Pacific Board of Trustees Confirmation Ballot

### *For Hall Councilors Only*

*To vote to confirm a candidate, mark the corresponding box. You may vote to confirm one candidate, both candidates, or neither candidate.*

Mirna Slim

Diana Chien

## Sidney Pacific Board of Trustees Confirmation Ballot

### *For non-Hall Councilors*

*To vote to confirm a candidate, mark the corresponding box. You may vote to confirm one candidate, both candidates, or neither candidate.*

Mirna Slim

Diana Chien

# Trustees (in May)



Amy Bilton



Chelsea He



Ian Jacobi



Tarun Jain



William Li



Po-Ru Loh

William Loh

Brian  
Spatocco

Ramesh  
Sridharan

Jit Hin Tan

George  
Tucker

Yuxi Zhang



# Graduating Trustees



Amy Bilton



Ian Jacobi



Po-Ru Loh

William Loh



Jit Hin Tan



Yuxi Zhang



# SP Buddy Program

- What is it?



SP Old-Timer



SP Newcomer

- Objectives:
  - Help newcomers ease into life at MIT
  - Get newcomers integrated into SP community, dorm government/leadership
  - Form friendships (“Better Together” etc.)

# SP Buddy Program

- How will it work?
- Schedule
  - SP residents apply - either as individuals or (preferably) in groups of 2
  - Incoming residents sign up
  - Matching – optimize closeness
  - Kickoff dinner
    - current residents cook with/without incoming residents
    - subsidized by Deans/SidPac
  - Point-based activities until late October
    - 10 activities, pick 3
    - Examples: Run a mile under 7:30 min (average), catch a fish from the Charles, get in a photo with President Reif, etc
  - Closing Event





# SP Buddy Program

- So what?



- Begging:
  - YOU can help organize this
  - YOU can sign up!!
  - YOU can ask others to sign up!!!

# Orientation Events

## WE NEED YOUR HELP

- Sunday 8/18 – Sunday 8/25: Welcome Desk
- Tuesday 8/27: SP Orientation BBQ and Movie Screening
- Friday 8/30: Plant Sale
- Saturday 8/31: Open Doors Night
- Sunday 9/1: SP Orientation Brunch
- Tuesday 9/3: SP + Ashdown Soccer Challenge
- Wednesday 9/4: SP Orientation Coffee Hour
- Friday 9/6: SP Orientation Dance Party
- Sunday 9/8: Learn to Swing Dance!
- Sunday 9/8: Photo Scavenger Hunt + Dinner
- Tuesday 9/10 & Thursday 9/12: HM Welcome Dinners
- Wednesday 9/11: Helpers & Interest Groups Coffee Hour
- Friday 9/13: Dessert Outing
- Saturday 9/21: Kimball Farms Bike Outing

# Interactive orientation map

- **What?** A map of the area with vendors grouped by category. Easily accessible with a smartphone or computer
- **Why?** Because MIT map lacks information and orientation guide has outdated information.
- **How?** Crowdsourcing. Send your suggestions to

<http://goo.gl/CHker4>



# Facilitating recycling and composting

Current system is deficient:

- Some (most) apartments come without any recycling and composting bins
- Lack of bins makes recycling inconvenient and composting almost impossible
- Placing food waste bags over corridor's carpet gradually produces stains and smell
- Food waste bags left outside doors for pickup don't seem to end in composting containers

Questions? Please contact [sp-environment-chair@mit.edu](mailto:sp-environment-chair@mit.edu)

# Facilitating recycling and composting

## Efficient new system:

- If you do not recycle or compost:
  - Nothing changes
- If you recycle and have a bin in your room:
  - Nothing changes
- If you recycle and do not have a bin:
  - A recycling bin will be provided that you can use and empty in one of main floor containers when full

Questions? Please contact [sp-environment-chair@mit.edu](mailto:sp-environment-chair@mit.edu)

# Facilitating recycling and composting

## Efficient new system:

- If you want to contribute to composting:
  - A food waste bin like those in kitchens will be provided to you
  - Free compostable food waste bags will be provided in every kitchen
  - Food waste bins in kitchens will be replaced by the next bins larger in size (will fit more than one bag)
  - Take food waste bags from your room to kitchen's container and deposit there

Questions? Please contact [sp-environment-chair@mit.edu](mailto:sp-environment-chair@mit.edu)

# Facilitating recycling and composting

## Efficient new system:

- Cleaning staff will change kitchen bins every morning as they do today
- To avoid (very unlikely) overcrowding of kitchen bins this will be open to only 5 rooms/floor
- If you want to contribute to composting and are not in the group of 5 rooms keep doing what you're doing today
- **If you enter the 5-room group please bring your food waste bag to kitchen!**

Questions? Please contact [sp-environment-chair@mit.edu](mailto:sp-environment-chair@mit.edu)

# Join the Newsletter Committee!

## Why should you join?

- Give your input to the newsletter.
- Win gifts for your contributions and/or popular articles you write!
- Free food!
- Minimal commitment:
  - Attend a monthly meeting, discuss ideas for new content.
  - Contribute one 200-300 word article per month.



Interested? Please contact [sp-newsletter-chair@mit.edu](mailto:sp-newsletter-chair@mit.edu)

# Service Awards

- Francisco (4S)
  - Great surrogate hall councilor
  - Held many summer hall events
  - Volunteered at other officers' events
  - Grills all the meats





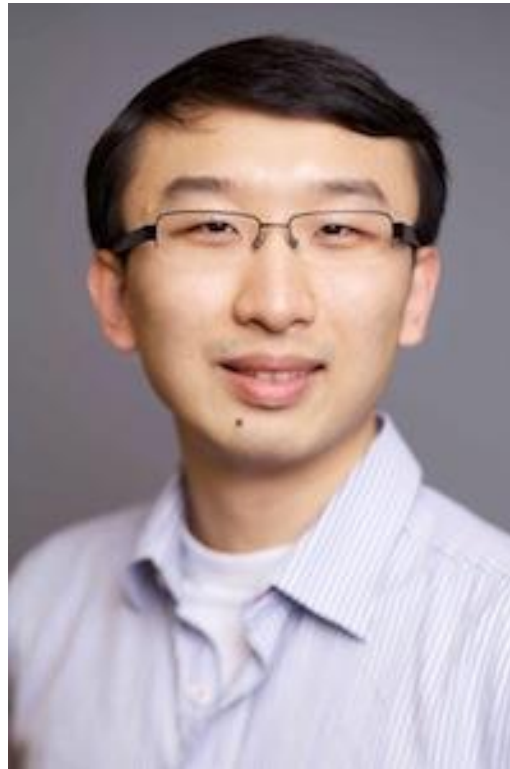
# Service Awards

- Mariana (5N)
  - Great surrogate hall councilor
  - Held many summer hall events
  - Volunteered at other officers' events



# Service Shout-Outs

- Yufei (CoSI)





# Upcoming events

## August:

- 7 [Wed]: Coffee Hour
- 10 [Sat]: Bike Trip to Walden Pond
- 11 [Sun]: Power Yoga
- 16 [Fri]: Tastes of New England + N<sub>2</sub> Ice Cream + Red Sox Screening
- 18 [Sun]: Outing to Hammond Castle
- 18 [Sun]: Power Yoga
- 21 [Wed]: Coffee Hour – Last one of summer
- 24 [Sat]: Cooking for Caspar
- 24 [Sat]: Budget requests due for Fall cycle
- 25 [Sun]: Power Yoga

## September:

- 1 [Sun]: Power Yoga
- 3 [Tues]: Next House Meeting

# Open Floor



# Food!

